

# DAFA Sound

## ABS Compact

### Product

Sound absorber manufactured in PE foam with a closed cell structure in which the cells undergo special perforation during the manufacturing process.

### Application

For damping (absorbing) noise in engine rooms, boats, machine shielding, pumps, compressors, marine, automotive, swimming pools, schools, hospitals, offices, etc. where the highest damp resistance and fire safety requirements apply.

The material has very low moisture and liquid absorption properties and is resistant to oil and common chemicals.

The thickness of the absorber can be adapted depending on the area of application and the desired result.

### Features

- Self-supporting material - can be used as a part of the structure
- Acoustic properties remain constant when exposed to liquid and moisture
- No fibres or dust
- Fire retardant quality
- Class A sound absorbing

### Assembly / preparatory work

Can be installed using mechanical fixings without prior removal / cleaning. The material can be prepared easily using a knife or water jet.

Can be supplied in full panels / sheets or customised for fixed dimensions.

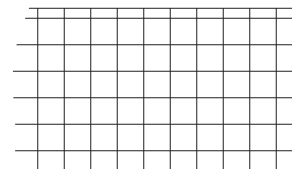
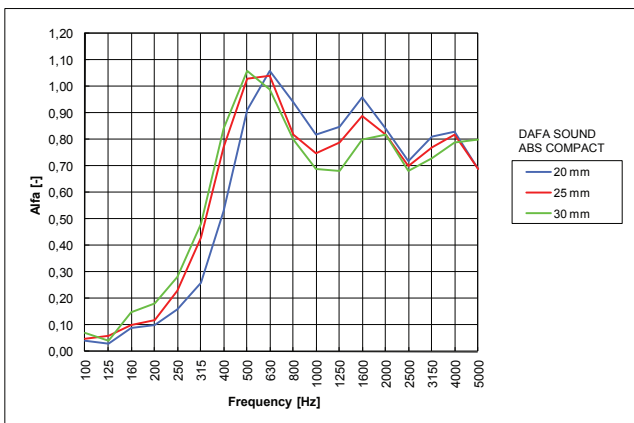
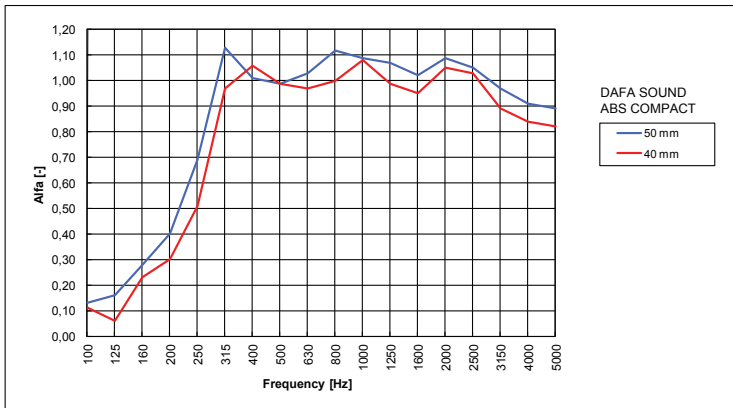


## DAFA Sound ABS Compact

### Technical data

Physical Properties	Test Method	Unit	Typical Physical Properties
Temperature resistance		°C	-40 / +80 (Up to 100 for non-loaded material)
<b>Fire-test-response Characteristics</b>			
Transportation	UL94	Class	HF1
Automotive	TS EN 45545-2	Class	HL2 for flooring. HL1 for ceiling and wall.
Building & Construction	NF F 16-101 DIN 54837 FMVSS 302 DIN 4102 EN 13501-1	Class	F1 S3, SR2, ST2 Pass B1 Class B-s2-d0
Colour			Black or white
Nominal Density	ASTM D3575-08 Suffix W ISO 845:2006	Kg / m <sup>3</sup>	25
Thermal Conductivity @ 23°C @ -5°C	ASTM D3575-08 Suffix V ISO 8301	W / mK	0.104 0.082
Water Pick Up by Diffusion (RH > 95% - after 28 days)	UNI EN 12088	Volume %	< 5
Sound absorption	ISO 354	Class	A

### Reverberation room testing according to EN ISO 354



Closed cell polyethylene foam

